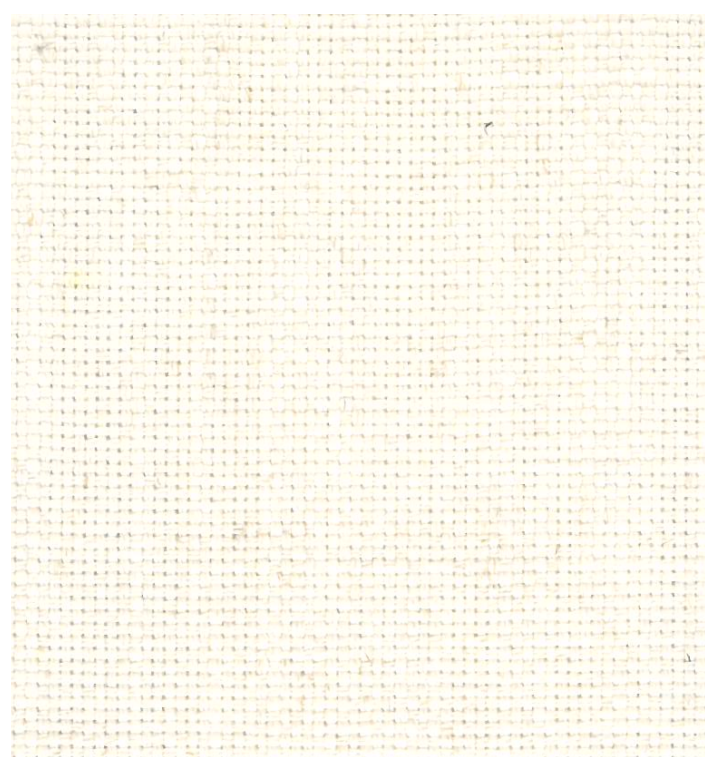


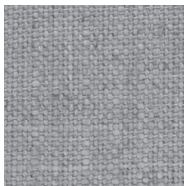
Nairobi

A

| | |
|--|---|
| Composizione/ Composition | 58% VI 26% LI - 16% CO |
| Altezza/ Width | 140 cm |
| Peso/ Weight | (± 5%) 429 g/m2 |
| Resistenza alla luce/ Colour fastness to light | Scuri/ Dark 4 |
| Martindale | 22.000 |
| Resistenza del colore al lavaggio/ Colour fastness to washing | 4 |
| Ignifugo Fireproof | no |
| Idrorepellente Waterproof | no |
| Antimacchia Stain resistant | no |



Nairobi 04
Pant. 11 -0604



Nairobi 06
Pant. 17-1505



Nairobi 07
Pant. 18-1248



Nairobi 10
Pant. 19-3514



Nairobi 14
Pant. 14-4201



Nairobi 23
Pant.18-2027



Nairobi 40
Pant. 13-0905



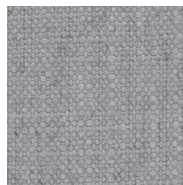
Nairobi 41
Pant. 16-1210



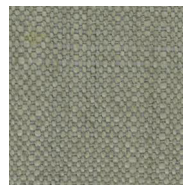
Nairobi 50
Pant. 17-0808



Nairobi 54
Pant.16-1412



Nairobi 55
Pant. 17-1506



Nairobi 56
Pant. 17-0610



Nairobi 57
Pant. 19-0809



Nairobi 61
Pant. 18-4320