

# B. Tecla

Noctis®

Composizione/  
Composition **75 %PL -25% CO**

Altezza/  
Width **142 cm**

Peso/  
Weight **(± 5%)  
360 g/m2**

Resistenza alla luce/  
Colour fastness to light **Scuri/ Dark  
3**

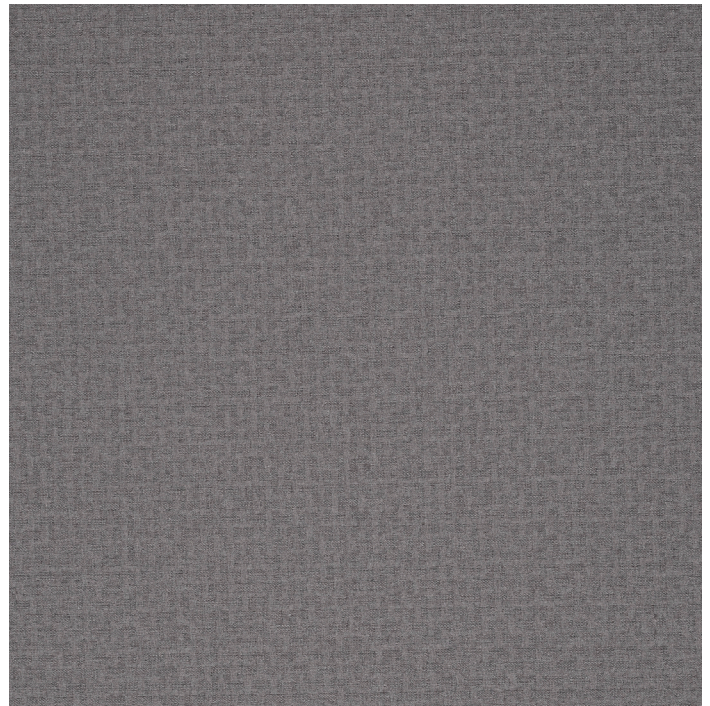
Martindale **25.000**

Resistenza del colore al lavaggio/  
Colour fastness to washing **4**

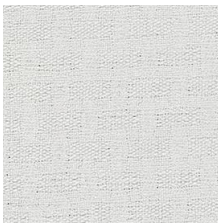
Ignifugo  
Fireproof **no**

Idrorepellente  
Waterproof **no**

Antimacchia  
Stain resistant **no**



**Tecla 12**  
Pant. 17-1500



**Tecla 01**  
Pant. 11-4800



**Tecla 02**  
Pant. 13-0905



**Tecla 04**  
Pant. 16-5803



**Tecla 05**  
Pant. 18-0515



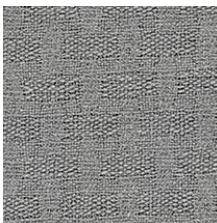
**Tecla 06**  
Pant. 19-1020



**Tecla 08**  
Pant.19-0812



**Tecla 15**  
Pant. 19-4324



**Tecla 18**  
Pant. 16-3801



**Tecla 19**  
Pant. 19-0414



**Tecla 20**  
Pant. 19-0303