

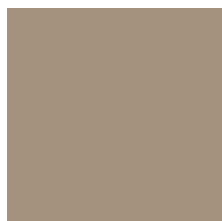
# C. Velluto

Noctis®

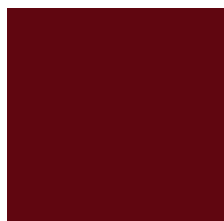
|  |  |
|--|--|
| Composizione/<br>Composition                                     | <b>100% PL</b>                                 |
| Altezza/<br>Width  | <b>145 cm</b>                                  |
| Peso/<br>Weight  | (± 5 in greggio)<br><b>360 g/m<sup>2</sup></b> |
| Resistenza alla luce/<br>Colour fastness to light                | -  |
| Martindale   | <b>&gt;45.000</b>                              |
| Resistenza del colore al lavaggio/<br>Colour fastness to washing | <b>5</b>                                       |
| Ignifugo/<br>Fireproof   | <b>no</b>                                      |
| Idrorepellente/<br>Waterproof                                    | <b>no</b>                                      |
| Antimacchia/<br>Stain resistant                                  | <b>no</b>                                      |



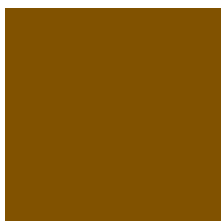
**Velluto 1**  
Pant. 16-1107



**Velluto 2**  
Pant. 15-1309



**Velluto 7**  
Pant. 19-1934



**Velluto 8**  
Pant. 18-0940



**Velluto 9**  
Pant. 18-0430



**Velluto 10**



**Velluto 11**



**Velluto 12**



**Velluto 13**  
Pant. 17-5513



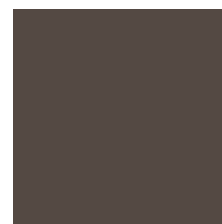
**Velluto 14**  
Pant. 16-1506



**Velluto 15**  
Pant. 16-4402



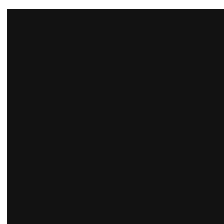
**Velluto 16**  
Pant. 18-0000



**Velluto 17**  
Pant. 18-0403



**Velluto 19**  
Pant. 19-4305



**Velluto 20**  
Pant. 19-4007