

Composizione/ Composition	100 % PL
Altezza/ Width	140 cm
Peso/ Weight	(± 5%) 300 g/m²
Resistenza alla luce/ Colour fastness to light	4
Martindale	50.000
Resistenza del colore al lavaggio/ Colour fastness to washing	3
Ritiro/ Shrinkage	2%
Ignifugo/ Fireproof	no
Idrorepellente Waterproof	no
Antimacchia Stain resistant	si

Norme di smacchiatura/ Cleaning instructions Tamponare tempestivamente i liquidi con panno asciutto o spazzolare lo sporco secco. Dab promptly the fallen liquids with a dry cloth or brush gently the dry dirt.

Macchie acquose - Bibite, caffè, vino/ Liquid stains - Drink, coffee, wine
Asportare i liquidi con carta assorbente o panno asciutto senza esercitare eccessiva pressione sul tessuto. In caso di penetrazione della macchia, strofinare con spugna umida, se necessario usare del sapone neutro da risciacquare abbondantemente con acqua tiepida e spugna pulita. Remove the stain using blotting paper or a dry cloth and avoid any pressure on fabric. In case the stain penetrates the fabric, rub gently with a damp sponge and if necessary, use a neutral soap to be well rinsed with tepid water and a clean sponge.

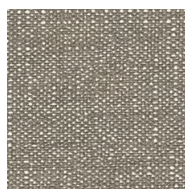
Macchie oleose - Grasso, salse/ Oily stains - Grease, sauce
Tamponare con carta assorbente o panno asciutto senza eccessiva pressione sul tessuto. In caso di penetrazione della macchia, strofinare con spugna umida, se necessario usare del sapone neutro da risciacquare abbondantemente con acqua tiepida e spugna pulita. Dab the stain using blotting paper or a dry cloth and avoid any pressure on fabric. In case the stain penetrates the fabric, rub gently with a damp sponge and if necessary, use a neutral soap to be well rinsed with tepid water and a clean sponge.

Penna e pennarelli / Pens and drawing pens
Agire prima che si asciughi l'inchiostro, passando sulla macchia alcol diluito in acqua, lavare poi con spugna e detersivo neutro per rimuovere l'alone. Before the ink becomes dry, pass on the stain alcohol diluted in water, wash with sponge and neutral soap to remove the mark.

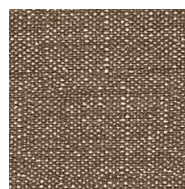
In caso di permanenza della macchia lavare in lavatrice come da norma di manutenzione. In case marks and halos remain, it is recommended to machine wash as per cleaning instructions.



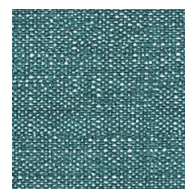
Bilia 25
Pant. 11-4301



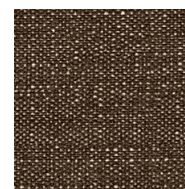
Bilia 07
Pant. 16-0906



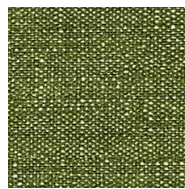
Bilia 21
Pant. 17-1321



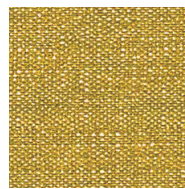
Bilia 66
Pant. 17-4728



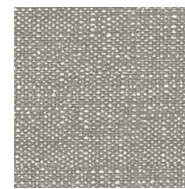
Bilia 84
Pant. 19-1218



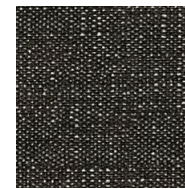
Bilia 38
Pant. 16-0435



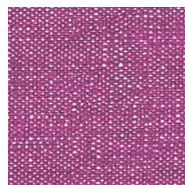
Bilia 28
Pant. 14-1036



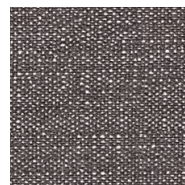
Bilia 31
Pant. 16-0000



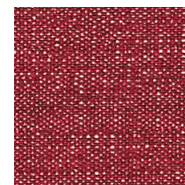
Bilia 22
Pant. 191-0303



Bilia 105
Pant. 18-3230



Bilia 104
Pant. 17-500



Bilia 12
Pant. 19-1663